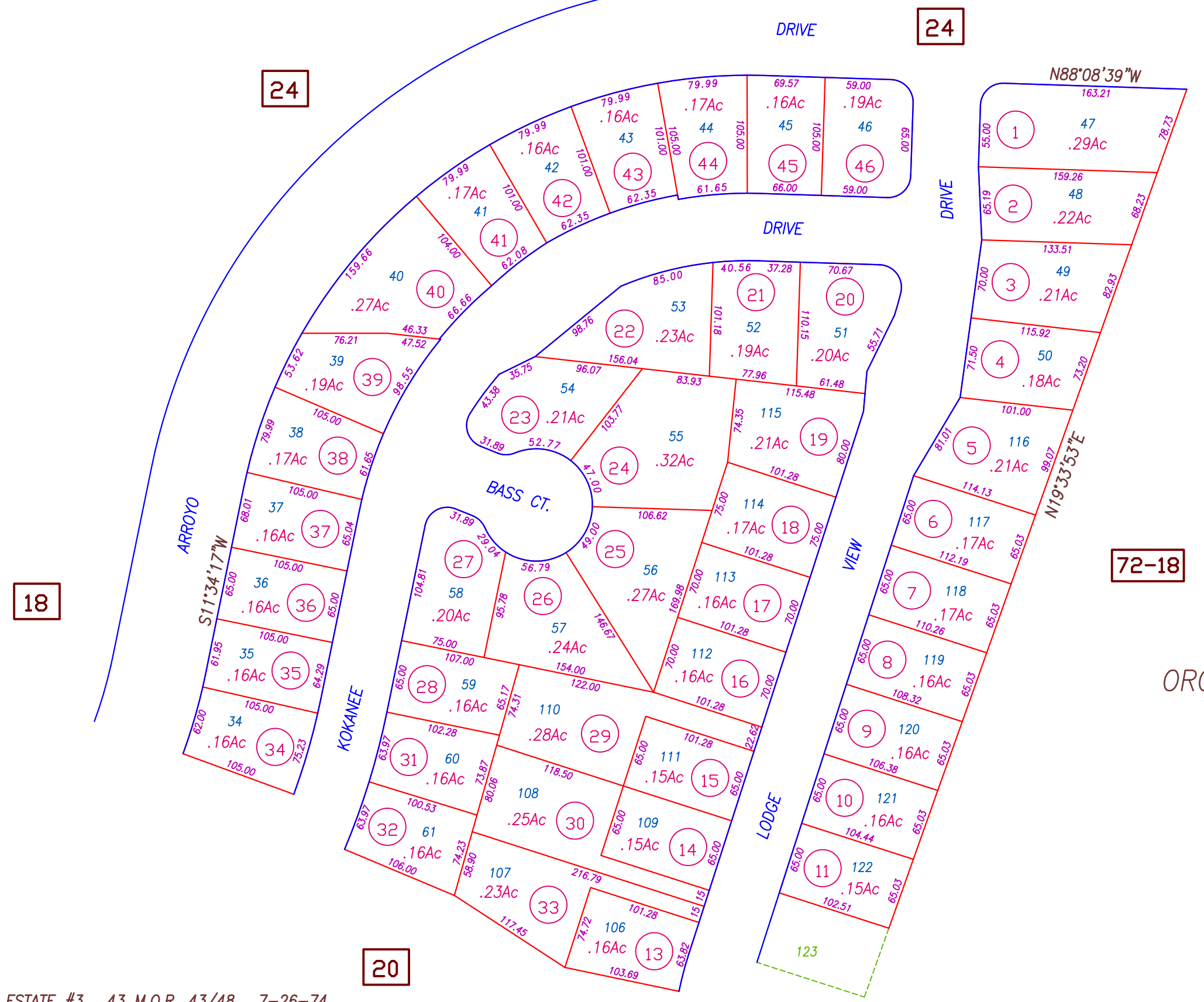


PTN. SEC'S 1 & 12, T.19N. R.4E. M.D.B.&M. &  
PTN. SEC'S. 6 & 7, T.19N. R.5E. M.D.B.&M.



LAKE

72-18

OROVILLE

Butte County Assessor's Map  
Book 69, Page 19

NOTE: These parcels are for assessment purposes only and may not constitute legal parcels.

KELLY RIDGE ESTATE #3, 43 M.O.R. 43/48, 7-26-74

CREATED BY	DB	CREATED ON	12-19-2001
REVISED BY	DB	REVISED ON	12-19-2001
		EFFECTIVE	2002-03 ROLL
Previous Book 34, Portion Of Page 71			
Compiled By The Butte County Assessor's Office			